

BACK TO SCHOOL SY2020-21: PREPARING FOR REMOTE LEARNING

PRUSSING SCHOOL - AUGUST 12TH, 2020

DR. GEORGE CHIPAIN, PRINCIPAL

MS. HANNA KAPICA, ASSISTANT PRINCIPAL

SY20-21 Instructional Priorities

| #1 | #2 | #3 | #4 | #5 | #6 |
|---|--|---|--|---|---|
| <p>Prioritize social emotional skill development, relational trust, and building strong classroom communities as the foundations for learning.</p> <p>We must be attentive to the well being of students and staff by providing strength based comprehensive supports.</p> | <p>Provide all students grade-level, standards-aligned instruction, regardless of their starting points.</p> <p>All students are capable of progressing to the next grade level and mastering that content. Focus on below grade-level work only when necessary for a student to complete their grade-level work. In place of isolated remediation, learning should be accelerated through just-in-time supports embedded in prioritized, grade-level, standards-aligned content.</p> | <p>Ensure curriculum materials are high-quality and provide coherent academic experiences for all students.</p> <p>High-quality, coherent curricula that can be used in a digital or non-digital environment offer essential support to teachers as they design learning experiences that prioritize regular collaboration between students to make sense of multiple perspectives and deepen their understanding of content.</p> <p><i>Note: Curriculum Equity Initiative available resources will be shared in August.</i></p> | <p>Increase the relevance of instruction.</p> <p>Leveraging students' lived experiences and expertise facilitates motivation and deep engagement in content where students are doing most of the thinking. Similarly, curriculum choices prioritize authentic and meaningful content that is responsive to students, our current moment, and our world today.</p> | <p>Use assessments that meaningfully connect to the curriculum and provide teachers with the information needed to help students access priority grade-level work.</p> <p>Teachers and students need assessments that will support them in moving all students forward with grade level learning. Assessments should reflect the critical abilities of the subject and grade level standards and ask students to apply these abilities to situations that are authentic to the discipline and are relevant to students' lives.</p> | <p>Anchor instruction in equity: to meet the needs of all students, start with those most marginalized.</p> <p>Focusing on the most marginalized students provides a strong foundation for instruction for all students and will help to address the opportunity and achievement gaps that have widened during the pandemic.</p> |

WHY REMOTE LEARNING VS HYBRID MODEL?

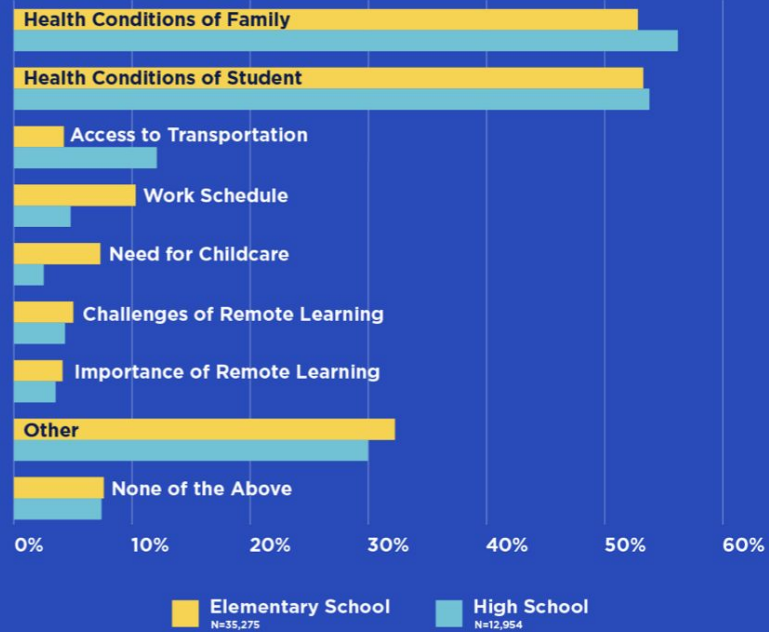
FULL REMOTE LEARNING UNTIL AT LEAST NOVEMBER 6TH

PRELIMINARY FRAMEWORK FEEDBACK

Families Not Yet Ready
to Return to Classrooms



Which factors affect your decision to not send your children to school for in-person instruction?



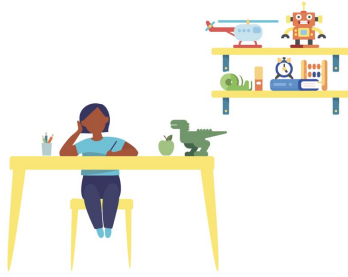
WHAT TO EXPECT FROM REMOTE LEARNING

Remote Learning

A Day in the Life of a CPS Elementary Student



1



Real time virtual instruction

An elementary student's day remote learning would mirror a day learning at school. It would include a mix of real-time instruction with their teacher and classmates, small group activities, and independent learning time within each of their classes. All CPS students will receive several hours of live instruction each and every day.

- ALL Teachers will continue to use Google Classroom
 - A school-wide document with all Google Classroom codes and Teacher contact information will be shared

WHAT TO EXPECT FROM REMOTE LEARNING

- Students will experience a virtual 'school day' that mirrors their in person experience as much as possible
- Expect for students to have breakfast, get dressed, and have all materials ready before virtual instruction

Remote Learning

A Day in the Life of a CPS Elementary Student



②

1, 2, 3...

+

-



Lunch and breaks throughout the day

Elementary school students will have independent time for lunch as well as short breaks during the school day.

WHAT TO EXPECT FROM REMOTE LEARNING

Remote Learning

A Day in the Life of a CPS Elementary Student



3



Academic electives and enrichment

Much like a normal school, students will also have self-directed time for electives, academic enrichment, and special classes such as arts and physical education in addition to real-time instruction.

- Students will engage in all core classes and special arts classes
- Teachers will take attendance each day

WHAT CAN I DO TO PREPARE FOR REMOTE LEARNING?

- Ensure that your child has access to the Internet
 - Click [here](#) for information on Internet Assistance Programs in Chicago
- Contact Prussing School if you still need a technology device
 - Please email Ms. Hanna Kapica, hkapica@cps.edu to schedule a time to pick up a device.

WHAT CAN I DO TO PREPARE FOR REMOTE LEARNING?

- Check your Device and Log into your CPS account at cps.edu/portal
 - Kindergarten, and all students new to CPS will need to set up accounts
 - If your child has forgotten their password, they will need to reset their password
- Familiarize yourself with Google Communication tools - [Student & Parent Tutorials](#)
 - Google Chat
 - Google Meet
 - Google Live Stream
 - Google Classroom

REGISTRATION, TRANSFERS, AND SUPPLY LISTS

- New Student Registration or Transfers
 - Please contact **Ms. Joan Norman** at jdnorman@cps.edu
 - You can download and complete the necessary forms in advance at <http://prussing.cps.edu/school-forms.html>.
- Prussing Supply Lists- <http://prussing.cps.edu/school-supply-lists.html>
- If parents do not have access to [Parent Portal](#), please email Mr. Ding at xding@cps.edu.

SCHOOL FEES FOR 2020-2021

Student fees for the 2020 – 2021 school year at Prussing School will be postponed until in-person learning resumes.

BACK TO SCHOOL EVENTS - WEEK OF AUGUST 31ST

- All families and students will need to attend virtual grade level orientations. More information will be posted on the school website.
- Families will be notified of times when they can pick up needed materials for Remote Learning
- Please ensure that you are checking the school website, Prussing.cps.edu, for up to date information.

HOW DO I COMMUNICATE WITH THE SCHOOL?

- **The best way is through email!**

Main Office Phone Number: 773 534-3460

- School Clerk, Ms. Ramona Rojas- rgrojas@cps.edu
- Clerk Assistant, Mrs. Joan Norman- jdnorman@cps.edu
- Principal, Dr. George Chipain – gcchipain@cps.edu
- Assistant Principal, Ms. Hanna Kapica – hkapica@cps.edu